

# Fleet Complete GPS Tracking Solution

An advanced GPS fleet tracking solution that provides visibility and insight over your assets and workforce in near real-time



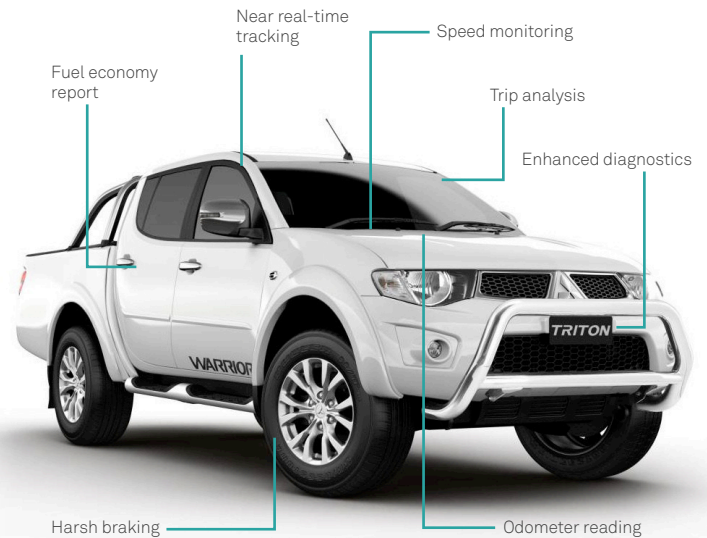
# What is Fleet Complete GPS Tracking?

Fleet Complete's GPS tracking solution is a web-based fleet management platform that collects data from your vehicles.

Advanced software analytics transform the raw data into actionable insights, enabling visibility of your mobile workforce and helping you to better run your business.

Near real-time and historical vehicle data gives you access to key information, such as location, vehicle health, and driver performance. You can access a wide variety of reports to better manage your fleet.

Ultimately, fleet tracking promotes safer and more productive drivers, while helping reduce operating costs. Ensure your business is well-positioned to best serve your customers!



Start benefiting from connected fleet management today!



Helps you manage safer operations



Improved productivity



Helps you lower operating costs



Better customer service

## Gain better visibility of your fleet

### Locate your vehicles in near real-time

With our user-friendly map functionality, you can view the location of your vehicles and their status on one interface.

### Detailed metrics and reporting

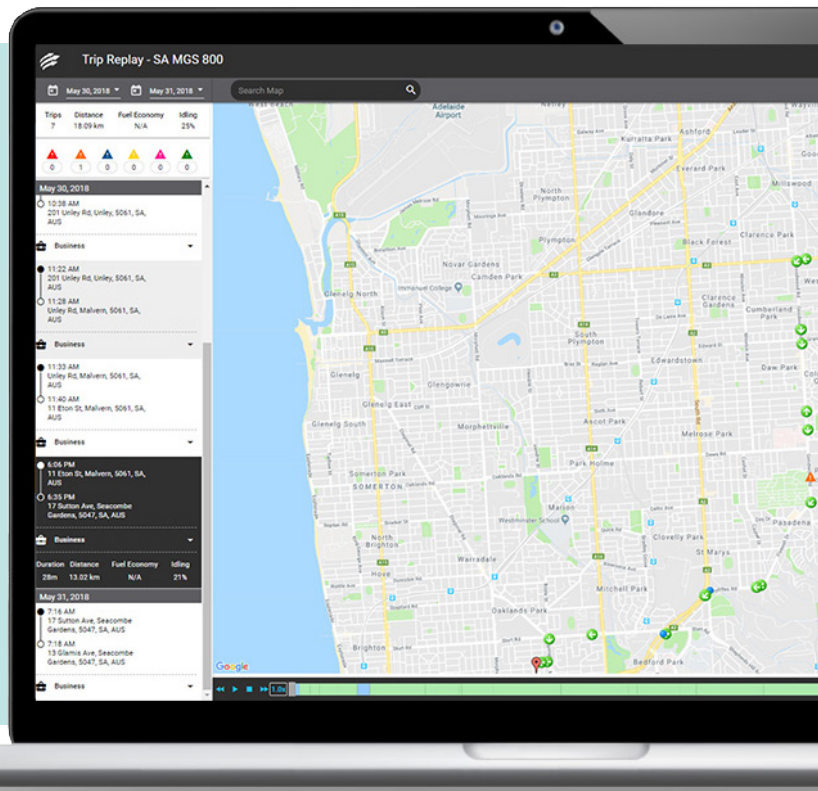
Help you make informed decisions around your fleet and resources with in-depth analysis on KPIs.

### Identify inefficiencies in your operations

Historical trip data gives you the opportunity to evaluate your fleet utilisation. It can help you improve daily route efficiency and ensure the best chance of maximum output is achieved each day, reducing overtime costs.

### Access through web portal

You can access your information from our web portal, including on a mobile device.



# Help reduce your total cost of ownership



## Proactively manage maintenance

Create a maintenance calendar and send scheduled and non-scheduled service notifications to drivers or fleet managers, based on time or usage requirements.



## Detect engine issues fast

Electronic Control Module (ECM) integrations enable alerts to be triggered when a fault code is detected, so you can more quickly address issues.



## Prevent unnecessary vehicle wear and tear

Generate detailed reports to see how your vehicles are being driven by reviewing events such as harsh cornering, braking and speeding.



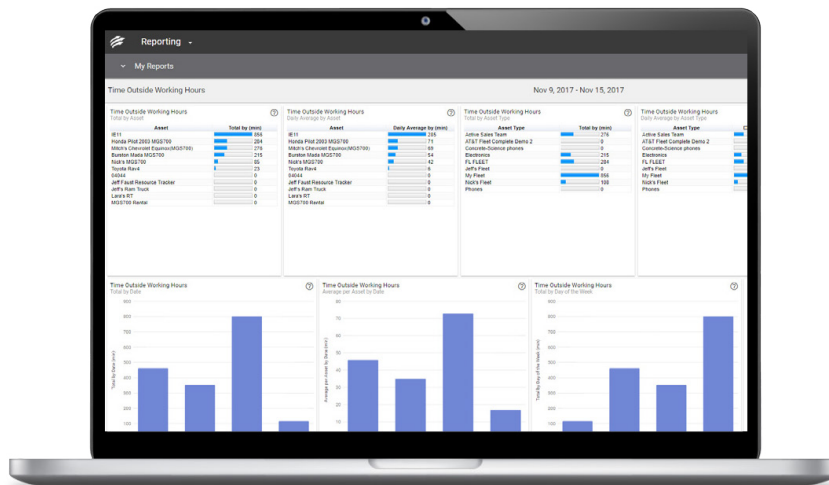
## Reduce fuel usage

Certain driver behaviour, such as idling and aggressive acceleration, increase fuel consumption, causing your monthly business costs to inflate.



## Vehicle inspection reporting

With our easy-to-use mobile applications, drivers can log minor and major vehicle defects that are sent directly to the Mechanic Portal. Now you can provide your fleet maintenance staff with access to data to review and conduct the necessary repairs.



## Generate a safer environment for your drivers and assets



### Driver performance coaching

With routine fleet performance reports and driver scorecards, you can identify areas of improvement for your drivers and reward those who are performing well.



### Accident notifications

Vehicle collision notifications and data retrieval allows you to take steps.



### Better safety for your assets

Get notified on unwanted asset activity to prevent theft or after-hours use.

## Provide better service to your customers



### Improved dispatch and response times

Utilise near real-time tracking to help you locate the nearest driver for optimal dispatch and inform your customers of unexpected delays.



### Proof of service

Alert customers to completed deliveries by sending them notifications as the driver leaves their location.



### Provide more accurate arrival estimates

Inform customers as to how far away a driver might be from their destination.



### Simplified project management

The Fleet Complete Task Tracker application will help manage assignments and projects on one interface. See all open, pending and completed jobs on one screen and manage your mobile personnel accordingly.

The smooth running of your fleet is your ultimate business card. Fleet Complete solutions offer you tools so that you can get the most out of your fleet performance and assist you in providing better customer service.

# Why Telstra and Fleet Complete?

Fleet Complete has partnered with Telstra to maximise their service offering with Australia's proven mobile network in reach, expertise and support. Our customers enjoy several distinct benefits from this partnership, including:



## National coverage

As a partner of Telstra, Fleet Complete has access to a network with more 4G coverage than anyone else. Iridium satellite service is available for connectivity outside cellular network range.



## Solutions customised for your business

Help your business run smoothly and efficiently with advice from a Telstra Business Specialist. Telstra has over 1,000 specialists nationwide to give you face-to-face personalised help.



## Global support

As one of the world's fastest growing fleet telematics business, we have a passionate team in place locally that is backed with global support. We are here to help our customers thrive.

## A scalable platform and additional solutions for your fleet



### Asset Tracker

Have you got non-powered assets sitting in the yard unsupervised? Now you can remotely monitor your valuable assets and their operational status from your mobile device and get alerted to unauthorised activity.



### Task Tracker

This cost-effective mobile application was specifically designed to help you manage multiple projects and jobs in the field. Send activities to mobile workers based on their geographical location and workload and easily keep track of all completed or pending assignments.



### FBT Reporting

The Electronic Logbook solution is a simple and convenient way to automate your time-consuming vehicle logbook.



### Remote Solution

Satellite, Dash Duress and Remote Pendant creates a solution that operates outside the mobile network coverage to help with safety of staff, vehicles and assets.\*



### Enterprise Reporting

Our Enterprise Services team are available to setup and run your database and reporting for you. They will act as your IVMS administrator and provide you with the reports needed to reach your goals.

## Things you need to know

Fleet Complete GPS Tracking solutions consists of two different hardware and software combinations, based on either the FC Web Platform or MyGeotab Platform. The GO7 and MyGetoab (including Base Plan, Business Plan, and Fleet Plan) solution is not compatible with the FC Web Platform.

The MGS800 and FC Web Platform is the latest GPS Tracking solution available from Fleet Complete and integrates with other optional add-on solutions including Asset Tracker, Task Tracker and FBT Reporting. The FC Web solution is not compatible with the Iridium Add-on or Satellite Unit.

\*In order to use a satellite add-on you need to purchase a Satellite unit from us and separately take up a satellite service from Fleet Complete or another third-party provider. For more details visit [telstra.com/fleetcomplete](http://telstra.com/fleetcomplete)

This brochure is for information purposes only and products and services mentioned may not be suitable to your circumstances. Please contact your Telstra representative to discuss options available and for further information. Products and services mentioned in this brochure are subject to our Critical Information Summary and Telstra's Our Customer Terms Telstra Mobile Network - Part 6 - Data Services of Our Customer Terms. Please contact your Telstra representative for further information. Benefits mentioned are general statements relating to the Fleet Complete GPS tracking solution. Not all statements apply to each product or services offered by Telstra. Please speak to your Telstra Representative for further information around Telstra's products and services.

G037 JUN 18

🏠 contact your Telstra account executive

☎ call 1300 telstra (1300 8357 878)

🌐 [telstra.com/fleetcomplete](http://telstra.com/fleetcomplete)

