

Telstra Programmable Network

Global Exchange

Today's modern enterprise connects to an ever-growing ecosystem of external partners, vendors, technologies and communities, spanning multiple geographical regions and different time zones. The ability to effectively connect and maintain access underpins operations, customer relationships, and is ever more crucial.

The good news is that you don't need to replace your entire corporate network to do so.

Global Exchange Connect to your business

Extend your wide area network and connect on-demand to a global community of business partners; including other enterprises, software vendors, public cloud providers and exchanges through Telstra Programmable Network's Global Exchange.

You can list your business on our Global Exchange either publicly or privately, or list your virtual machine on our VNF Exchange to allow your business partners to easily connect with you and create business-to-business connections.

How it works

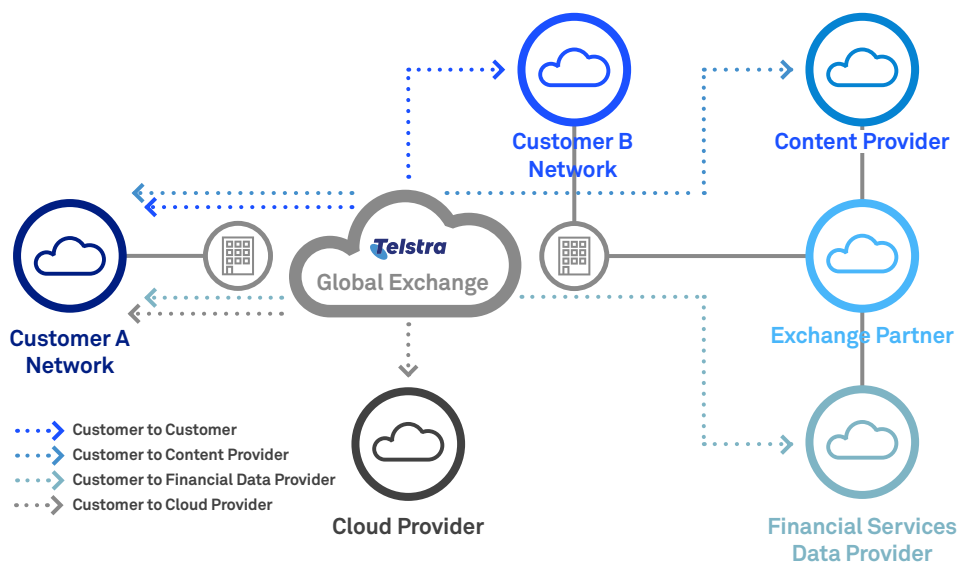
Telstra Programmable Network offers you the power to identify and connect on-demand to your business partners across any of its Points of Presence (PoPs). Our PoPs are distributed globally and provide coverage across multiple locations, including our data centres and partner sites. The pre-laid connections mean that you can quickly create connections between your office and other sites in minutes, and start sending data between the endpoints.

Global Exchange is a component within Telstra Programmable Network. You can achieve different outcomes and use cases when combined with other Telstra Programmable Network components such as VNF Marketplace.



Global Exchange

- Access a complete global ecosystem
- Deploy networks instantly
- Reduce network complexity
- Improve application performance
- Increase security
- Easy business to business connections
- Private or public exchange

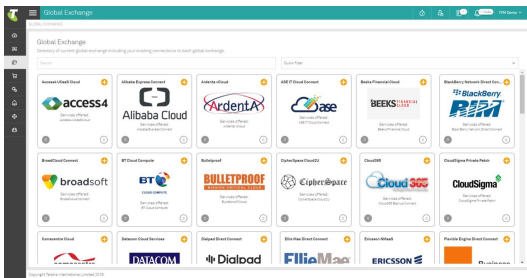


Features

Access a complete global ecosystem easily

You can access our Global Exchange directory either using the Graphical User Interface (GUI), or an Application Programmable Interface (API). This lets you easily identify your key business partners including cloud providers, or locate them within any Telstra Programmable Network-enabled location. It also allows business partners to connect to you via the directory. You can list yourself publically or privately on the Global Exchange directory to easily allow business partners to connect to you.

Our existing Global Exchange offers you access to 170+ Exchange Partners and Cloud Service Providers including AWS, IBM Cloud, Equinix Cloud Exchange, Microsoft Azure and many more. In the near future, we will be connecting with partners such as SaaS providers and financial exchanges.



Improve application performance with automation

Select either automated or manual authentication when establishing connections.

Increase Security

Avoid network vulnerabilities associated with the public Internet by establishing private Layer 2 Ethernet connections.

Telstra IPVPN or NextIP customers can also directly access Global Exchange through the Telstra Programmable Network and connect with different Global Exchange Partners securely.

Benefits

Flexible charges

You only pay for what you use, allowing your business to be more agile and react to market conditions efficiently. Select your bandwidth, enter your network parameters and choose the duration of use to get an instant estimate of your service fee.

Deploy networks instantly and reduce network complexity

Rapidly provision network circuits with scalable bandwidth and connect in near real time to our Global Exchange Partners.

Scalability

Burst your bandwidth for short periods of time or downsize your connection during low peak timing. Use your Global Exchange connections as your business needs without having to be tied down to renewal or upgrade fees.

Easy business-to-business connections

Our Global Exchange makes network integration and extranets take a fraction of the time. List your business on the Global Exchange to allow other businesses to connect to you. You have the option of listing your network that is connected to Telstra Programmable Network, or listing your Virtual Network Function that runs within Telstra Programmable Network.

Choice of Public or Private Exchange

You can choose to list your business publicly on the Global Exchange or privately so that your business is only visible to those you choose to grant private network access.

Contact your Telstra account representative for more details.

Australia

☎ 1300 telstra (1300 835 787)

🌐 telstra.com.au

International

☎ Asia +852 2983 3388

🌐 telstraglobal.com

Americas +1 877 835 7872

EMEA +44 20 7965 0000

Australia +61 2 8202 5134

Channel Partners partners@team.telstra.com

📧 Sales tg_sales@team.telstra.com